



Methane Detection Probe

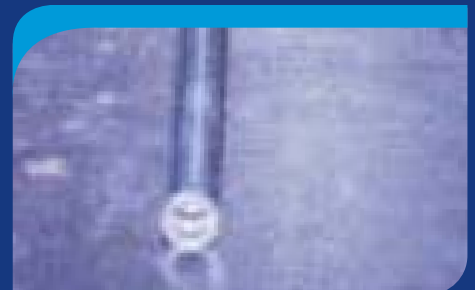
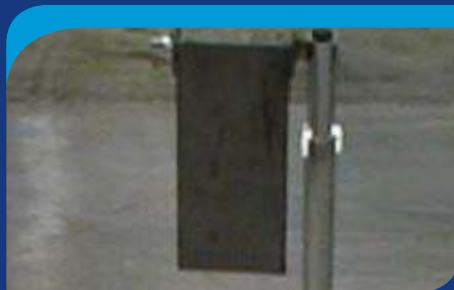
Safely check the methane content in the air beyond roof support with the Methane Detection Probe. The probe is very maneuverable even at full extension which is 47 feet. Featuring an aluminum five section extending pole with locking collars, and an extendable instrument snout, the Methane Detection Probe from Johnson Industries is a versatile tool that will help ensure the safety of your facility and your employees. This Methane Detection Probe can be steered to an exact location at the face of a coal mine, assuring accuracy, quality, and safety for your facility and mining site.

**OTHER
EQUIPMENT**

Probes



**JOHNSON
INDUSTRIES**



Products Developed for: Mining, Utility, Municipality, Communication, Airport, Factory, Industrial, Construction, Medical, & Recreation Industries



(606) 639-2029



101 Pine Fork
Pikeville, KY 41501



sales@johnsonindustriesinc.com

www.JohnsonIndustries.com



Methane Detection Probe

Equipment Specifications

- Aluminum five section extending pole with locking collars
- Extendable instrument snout reaches over rib gob
- Detecto-Probe can actually be steered to exact location at face.



Standard Dimensions:

- 47 ft from handle to center of tires, (max)
- 7 ft from center of tires to instrument, (max)
- Two tires, 16" diameter



Available Options:

- Contact us with your requirements so we can build to your specifications.
- Call Today! **(606) 639-2029**



Industries Used Or Can Be Used:

- Mining Industries
- Salt Mining
- Coal Mining
- Molybdenum Mining
- Zinc Mining
- Potash Mining
- Gold Mining
- Rock Mining