



Utility Truck (Ground Support Utility Truck)

The Ground Support Utility Truck was built specifically for the airline industry. The GS Utility Truck has plenty of power for hauling or towing jobs in and around small airports. Johnson Industries produces high quality burden vehicles like the Ground Support Utility Truck for safety and efficiency. From industrial duty cars, to sampling systems, Johnson Industries is the authority on mining equipment and burden vehicles.

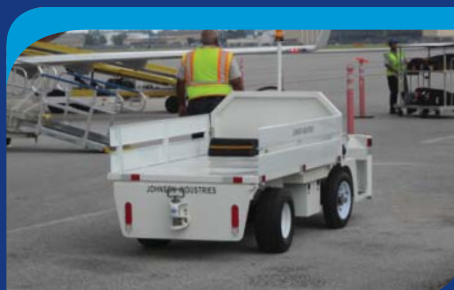
With features like 10HP continuous, three phase AC motor, a high torque 2-speed differential, and a 550 amp AC controller, the Ground Support Utility Truck is a versatile towing vehicle for airports. Featuring 3500 lb front and rear axles, dynamic braking, and a programmable smart charger, the Ground Support Utility Truck from Johnson Industries is a great solution for the airline industry's towing needs.

BURDEN VEHICLES

Trucks



JOHNSON INDUSTRIES



Products Developed for: Mining, Utility, Municipality, Communication, Airport, Factory, Industrial, Construction, Medical, & Recreation Industries



(606) 639-2029



101 Pine Fork
Pikeville, KY 41501



sales@johnsonindustriesinc.com

www.JohnsonIndustries.com



Ground Support Utility Truck

Vehicle Specifications

- Front & rear axle rated at 3,500 pounds
- Programmable smart charger
- 10 hp continuous three phase ac motor
- High torque 2-speed differential
- 7" rear drum brakes
- 550 amp ac controller
- Sealed 500 amp solenoid
- 205 ah batteries (14kw-hr)
- Truck style steering
- Led lights
- Panic disconnect
- Adjustable top speed
- Back-up beeper
- Horn
- Tail/brake/back-up lights
- LCD display for monitoring
 - Speed/RPM/Odometer
 - Motor temperature
 - Controller temperature
 - State of charge
- Safety features include:
 - Side-tilting bed for maintenance access
 - Must be stopped to choose opposite direction
 - Timer shuts down unattended vehicle
 - Dynamic braking
 - Seat belts and hip restraints



Size and Performance:

- **Payload:** 2500lbs
- **Max Speed:** 25MPH
- **Tow Capacity:** 5000lbs
- **Bed Size:** 48" x 94"



Available Options:

- Rear wet brakes
- Front disc brakes
- Battery watering system
- Side rails for bed
- Strobe light
- Pulse pedal



Industries Used Or Can Be Used:

- Airports
- Factories
- Warehouses
- Mining
- Construction
- Hospitals
- Golf Courses
- Colleges
- Municipalities
- Amusement Parks